

2U Video Wall Controller

DMC9000-2U-V3



Features

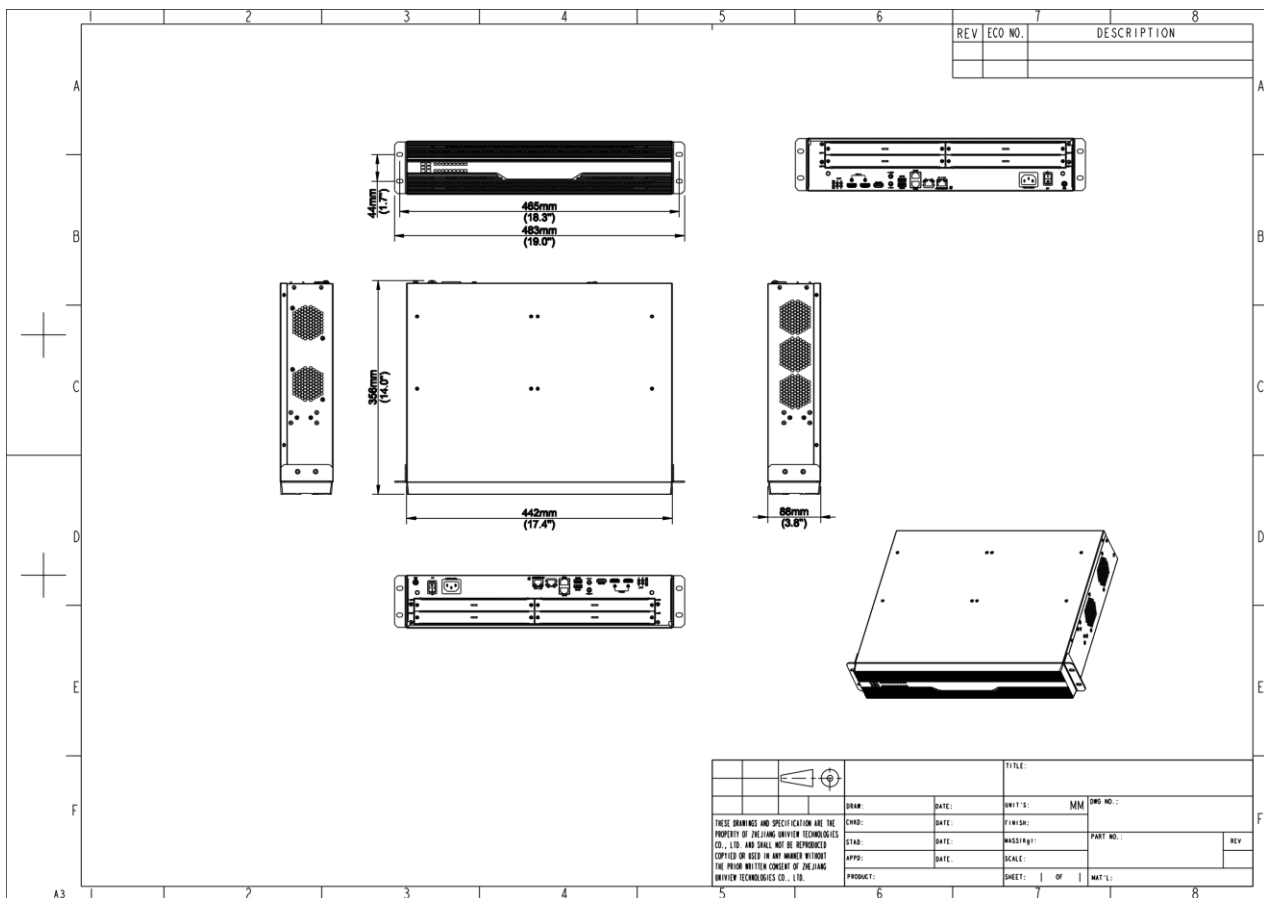
- FPGA architecture and Uniview's core image processing strategy provide excellent image processing performance. Embedded Linux OS ensures 24/7 stable operation and protects the device from hackers and viruses.
- Plug-in design for boards provides flexible board application and makes the upgrade、 expansion and maintenance of the system easier.
- Advanced PCIe switching chip in the industry. Each signal has a dedicated transmission channel、 which ensures the real-time display of images of all signals. And a service board can be inserted into any service board slot、 which allows users to apply boards flexibly.
- Resolution Real-time Total Adaptation technology. Each device supports four video walls with different resolutions、 and the resolution can be customized.
- Supports window opening、 roaming and zooming at any position on the video wall. The unique video processing algorithm ensures that the image quality is not affected during zooming.
- Supports "Picture-in-Picture" mode、 which allows users to watch videos on top of other windows、 presenting flexible layouts.
- Supports saving the video wall layout as a scene、 so that the layout can be used at any time later. Up to 64 scenes can be saved. Supports scene sequence.
- Intelligent temperature control design of fans keeps the heat dissipation and noise at an ideal level、 and ensures the noise is no more than 30 dBA in conference rooms.
- Intelligently monitors board power supply and board temperature. When abnormal board power supply or temperature is detected、 the board will automatically shut down to safeguard device operation.
- Supports small pixel pitch LED displays.

Specifications

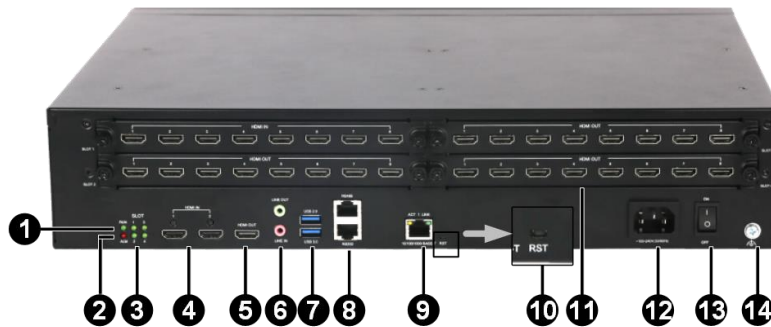
Model	DMC9000-2U-V3
Output	
Output Board Type	4 x HDMI, 8 x HDMI, 4 x DVI-D
Input	
Input Board Type	4-ch HDMI, 8-ch HDMI, 4-ch DVI-D, 2-ch HDMI (4K)
General	
Product Dimensions (W x H x D) (mm)	442 x 356 x 88
Weight (Kg)	7.3
Full-loaded Consumption (W)	<100
Host Consumption (W)	<20
Service Board Slots	4
Mixed Insertion	Support
Control Board Interface	2 x HDMI input interface, 1 x HDMI output interface (reserved), 1 x 3.5mm audio input interface (reserved), 1 x 3.5mm audio output interface (reserved), 1 x USB 2.0 interface, 1 x USB 3.0 interface, 1 x RS232 interface, 1 x RS458 interface, 1 x Gigabit Ethernet port, 1 x power interface, 1 x RST key
Power Supply	100 V ~ 240 V AC; 50 Hz/60 Hz
Operating Temperature	0°C ~ 50°C
Operating Humidity	0% ~ 95% (No condensation)
Storage Temperature	-40°C ~ 70°C
Storage Humidity	0% ~ 95% (No condensation)
Screen Control	
Roam and Overlay	Up to 32 windows are allowed for each video signal interface. The windows can roam at any position on the video wall.
Number of Windows	Up to 32 windows are allowed for each video signal interface. The window opening resources of all signal interfaces can be shared. The windows can roam at any position on the video wall.
One-click Layout	One-click to create a video wall with an M x N layout or fixed layout.
Multiple Video Walls	Each device can create and manage four video walls with different configurations.
Scene Management	Up to 64 scenes can be saved.
Advanced	

Signal Delay	<105ms
Output Sync	Fully synchronized
Power Failure Protection	When the device is accidentally powered off, the current running services and layout will be retained and restored after restart.
Seamless Switching	Support

Dimensions



Interface



1: RUN indicator	2: ALM indicator
3: Board status indicator	4: HDMI input interface
5: HDMI output interface (reserved)	6: Audio input/output interface (reserved)
7: USB interface	8: Serial interface
9: Network interface	10: Reset key
11: Service board slot	12: Power interface
13: Power on/off switch	14: Grounding terminal

Ordering Information for Optional Accessories

Model	Remarks
FB-SC90-04HI-E-NB	4-ch HDMI input、 Max. resolution: WUXGA (1920*1200) @60Hz
FB-SC90-08HI-E-NB	8-ch HDMI input、 Max. resolution: WUXGA (1920*1200) @60 Hz
FB-SC90-04DI-E-NB	4-ch DVI-D input、 Max. resolution: WUXGA (1920*1200) @60 Hz
FB-SC90-02UH-E-NB	2-ch HDMI input、 Max. resolution: 4K (3840*2160) @30 Hz
FB-SC90-04HI-X-NB	4-ch HDMI output、 Max. resolution: WUXGA (1920*1200) @60 Hz
FB-SC90-08HI-X-NB	8-ch HDMI output、 Max. resolution: WUXGA (1920*1200) @60 Hz
FB-SC90-04DI-X-NB	4-ch DVI-D output、 Max. resolution: WUXGA (1920*1200) @60 Hz

Zhejiang Uniview Technologies Co., Ltd.

No. 369, Xietong Road, Xixing Sub-district, Binjiang District, Hangzhou City, 310051, Zhejiang Province, China (Zhejiang) Pilot Free Trade Zone, China

Email: overseasbusiness@uniview.com; globalsupport@uniview.com

<http://www.uniview.com>

©2023-2025 Zhejiang Uniview Technologies Co., Ltd. All rights reserved.

*Product specifications and availability are subject to change without notice.

*Despite our best efforts, technical or typographical errors may exist in this document. Uniview cannot be held responsible for any such errors and reserves the right to change the contents of this document without prior notice.